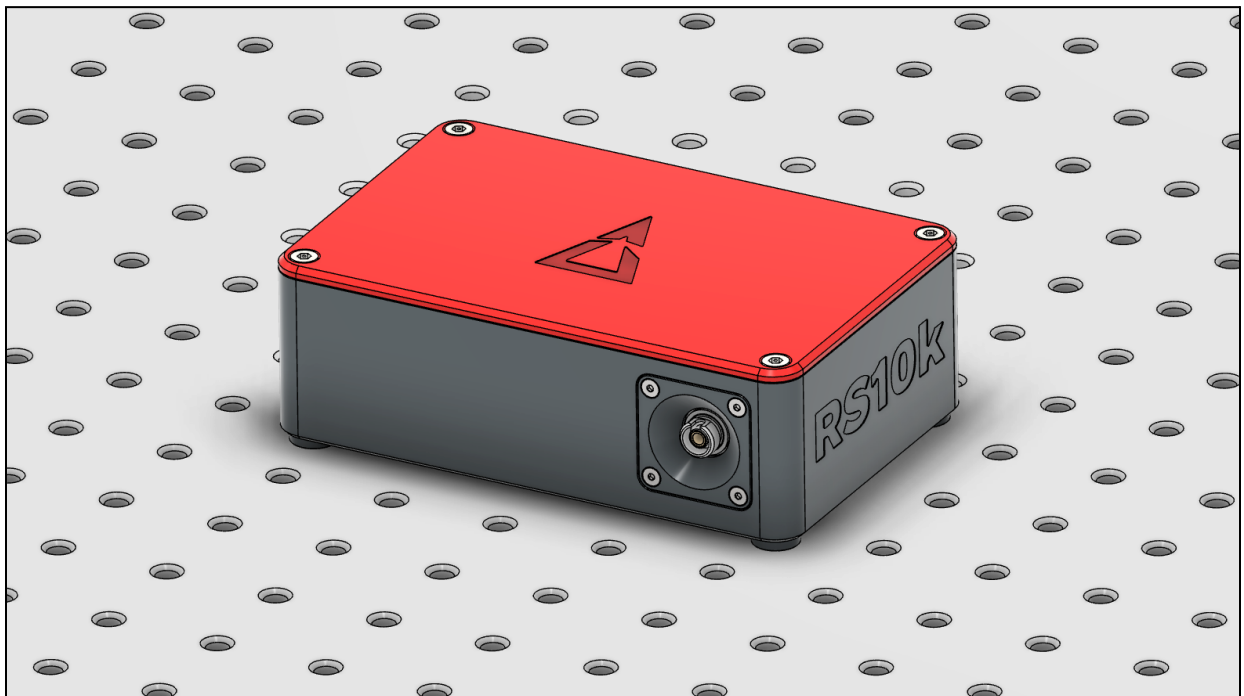


RS10k Echelle Spectrometer

User Manual



© Redback Systems Pty Ltd. All rights reserved. No part of this publication may be reproduced by any means without the written permission of Redback Systems.

Thorlabs is a registered trademark of Thorlabs Inc in the United States and/or other countries.

Windows is a registered trademark of Microsoft Corporation in the United States and/or other countries.

The information in this publication is believed to be accurate as of the publication release date. However, Redback Systems does not assume any responsibility for any consequences including any damages resulting from the use thereof. The information contained herein is subject to change without notice. Revision of this publication may be issued to incorporate such change.

Table of Contents

| | |
|---|-----------|
| 1. Introduction | 4 |
| 2. Requirements | 4 |
| 3. Warnings | 5 |
| 4. Safety Precautions | 6 |
| 4.1 General Handling | 6 |
| 4.2 Fibre Installation | 6 |
| 5. Installation | 7 |
| 5.1 Contents of Shipment | 7 |
| 5.2 Spectrometer Interface | 7 |
| 5.3 Optical Fibre | 8 |
| 5.3.1 Cleaning Optical Fibre Connectors | 9 |
| 6. Software | 10 |
| 6.1 Updates + Downloads | 10 |
| 6.1.1 Check your software version | 10 |
| 6.2 Software Installation | 11 |
| 6.3 Wavelength Calibration | 12 |
| 6.4 User Interface | 13 |
| 6.4.1 Toolbar Actions | 14 |
| 6.4.2 Spectrum Acquisition | 15 |
| 6.4.3 Saving data | 15 |
| 6.4.4 Regions of interest (ROIs) | 16 |
| 6.4.5 Dark Screen | 16 |
| 6.4.6 Periodic Acquire | 17 |
| 6.4.7 Dark Calibration | 18 |
| 6.4.8 Flat-Field Calibration | 19 |
| 6.4.9 Simple Flat | 20 |
| 6.4.10 Overexposure Warning | 21 |
| 6.5 Python API | 22 |
| 6.5.1 Requirements | 22 |
| 6.5.2 How to Connect | 22 |
| 6.5.3 API Command List | 23 |

| | |
|------------------------------------|-----------|
| 6.5.3 API Example | 25 |
| 6.5.4 API Troubleshooting | 25 |
| 6.6 General Troubleshooting | 26 |
| 6.6.1 Wavelength offset correction | 26 |
| 7. Device properties | 27 |
| 7.1 Optical Parameters | 27 |
| 7.2 Device Parameters | 27 |
| 7.3 Device Dimensions | 28 |
| 8. Technical Support | 29 |

1. Introduction

Thank you for purchasing a Redback Systems product. This manual provides you with directions on the device installation and operation as well as a brief introduction to the RedSolve software. Please read the following instructions carefully.

NOTE: Please read this manual carefully before installing and operating your new RS10k spectrometer. It is important to understand and follow all safety, installation, operation, and maintenance procedures as stated to ensure proper functionality.

2. Requirements

To ensure your computer can operate the device software and drivers, please read the hardware and software system requirements below. Note that at this time only the Windows operating system is supported. In addition to hardware requirements, an internet connection is required for downloading the device driver, software and manual.

Minimum hardware and software requirements:

- Operating System: Windows 10 (64 bit)
- Processor: Intel Core i5 or AMD Ryzen 5
- USB 2.0 port
- RAM: 8.0 GB
- HDD: 32 GB internal hard drive

Recommended hardware and software requirements:

- Operating System: Windows 10 (64 bit)
- Processor: Intel Core i7 or AMD Ryzen 7
- USB 3.0 high speed port (required for highest acquisition rate)
- RAM: 16.0 GB RAM
- HDD: 500 GB internal SSD hard drive

3. Warnings

- Your Redback Systems spectrometer is a precision optical instrument. Always handle your spectrometer with the level of care appropriate for such instruments.
- There are no user serviceable parts inside the spectrometer housing or inside the camera. Subsequently, both components **MUST NOT** be opened.
- Your Redback Systems spectrometer does not contain a shutter. Avoid illuminating the detector with high-power lasers.

4. Safety Precautions

4.1 General Handling

- Handle the spectrometer with care.
- Make sure the spectrometer is placed on a flat surface with its red lid at the top.
- Do not operate in damp or wet conditions with RH >70%.
- Do not use the spectrometer in an outdoor environment.
- Do not disassemble the spectrometer or attempt to modify or repair it.
- Do not subject the spectrometer to mechanical shock or vibration.
- Do not operate the spectrometer in explosive environments.
- Avoid static electricity.

4.2 Fibre Installation

- Take care when installing the optical fibre.
- Only use FC/PC fibre connectors as specified in Section 5.3 of this manual.

5. Installation

5.1 Contents of Shipment

Please inspect the device mechanically and unpack the contents in a clean, dry, and EDS-free area. Verify that you have received the following items with the package:

- RS10k spectrometer in Pelican 1200 transport case
- USB 3.0 cable (2 m)
- S405-XP and 780HP single-mode fibres with FC/PC to FC/APC connectors
- USB flash drive and Quick Start Guide

5.2 Spectrometer Interface

Connect your RS10k to a high-speed USB 3.0 port on your computer which will enable RedSolve to process full range spectra at up to 10 Hz repetition rate.

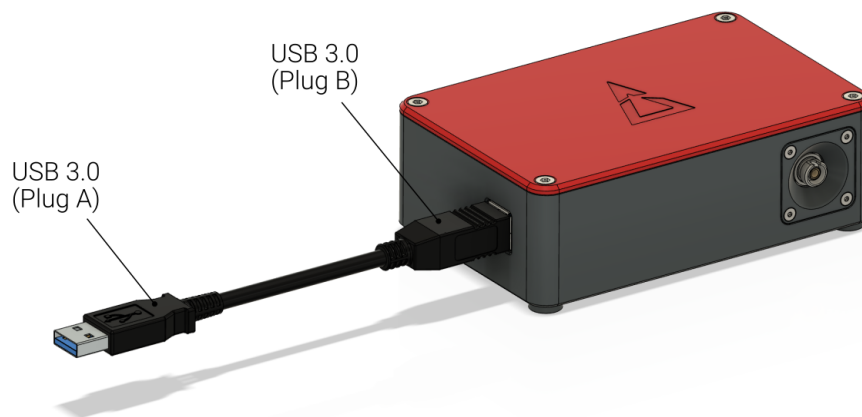


Figure 1: RS10k spectrometer USB interface.

NOTE: Do not connect the RS10k Echelle Spectrometer to any PC prior to installing the software application and device drivers. Use the included USB 3.0 cable to connect the RS10k spectrometer with your desktop PC or laptop.

5.3 Optical Fibre

The RS10k is specifically designed to work seamlessly with **single-mode fibres** that are equipped with **FC/PC connectors**. When you receive the device, it will come with two hybrid single-mode fibres (SMFs) that are suitable for your spectrometer's wavelength range. In Figure 2, you can see a depiction of commonly utilised single-mode fibres, which effectively cover the wavelength range of your spectrometer. The solid bar shows the transmission range given in the supplier's datasheet. The measured range can vary from fibre to fibre and often exceeds the theoretical limit (see hatched area).

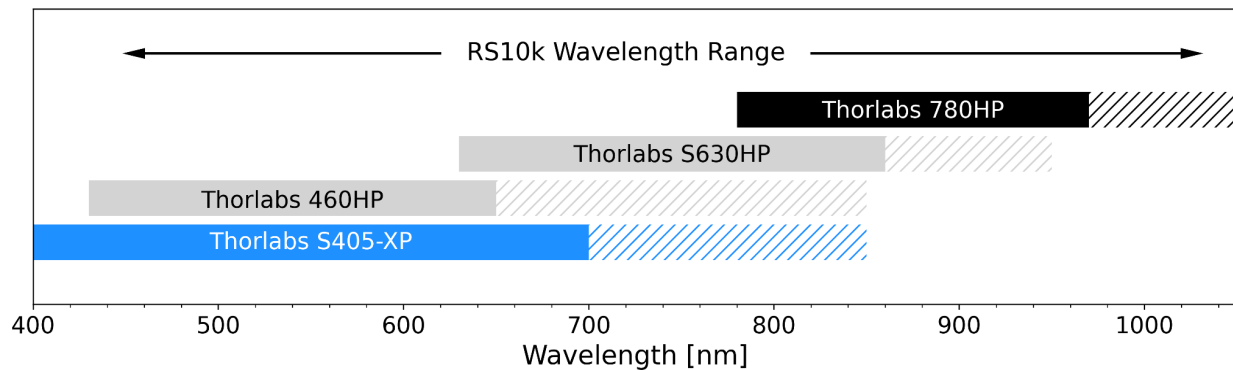


Figure 2: Selection of typical SMFs compatible with the RS10k wavelength range. The hatched area indicates the measured fibre transmission, exceeding the theoretical range.

Butt coupling FC/APC fibres to FC/PC fibres may result in light loss of up to 50%. We recommend using hybrid patch cables with FC/PC and FC/APC connectors if your experiment is based on APC fibres. Your RS10k package includes a set of hybrid patch cables (Thorlabs S405-XP and Thorlabs 780HP) which cover the 450-1030 nm range.

NOTE: If your system requires fibres with FC/APC connectors please use the included hybrid patch cables to adapt your fibre system to the RS10k spectrometer.

Testing of the device has revealed that light leakage through coloured furcation tubes is able to be detected in the NIR range of the spectrum. Therefore, for best results, we recommend using fibres embedded in **black** or **metal furcation tubes** only. Alternatively, the device should be operated with the room lights switched off.

5.3.1 Cleaning Optical Fibre Connectors

The optical fibre must be thoroughly cleaned before plugging into the device. Please ensure that the fibre tip is free of scratches, dust, or any kind of dirt to achieve the best possible performance. We recommend using a fibre inspection microscope to regularly inspect the fibre-end faces at high magnification. Clean the connector ends in case dust and dirt has settled on the fibre tip. Figure 3 shows a successfully cleaned fibre surface for reference (see right image).

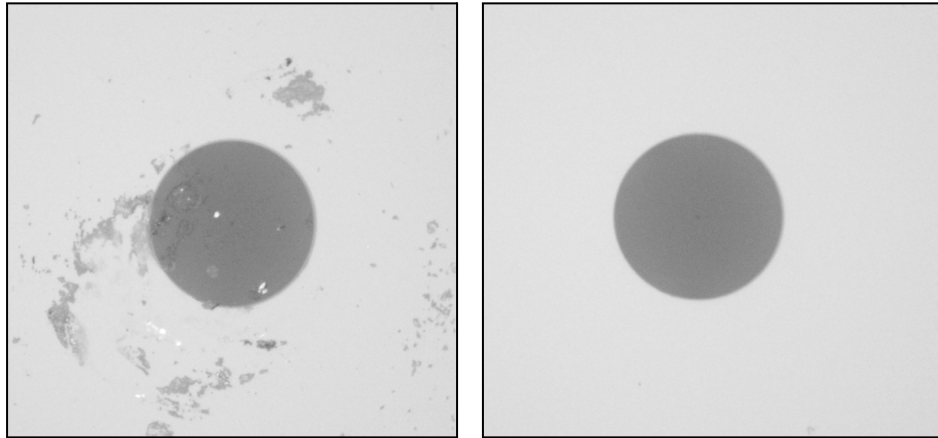


Figure 3: Microscope images of a dirty (left) and clean (right) fibre tip.

6. Software

6.1 Updates + Downloads

Each spectrometer is shipped with the current version of RedSolve at production date. The latest version of the RedSolve can be downloaded from our website: www.redback.systems/downloads.

Prior to installing any updated software, you should first disconnect the spectrometer from the computer and uninstall the current software completely from the computer.

6.1.1 Check your software version

You can check what version of the RedSolve software you have installed, under the Options file menu click About (see Figure 4).

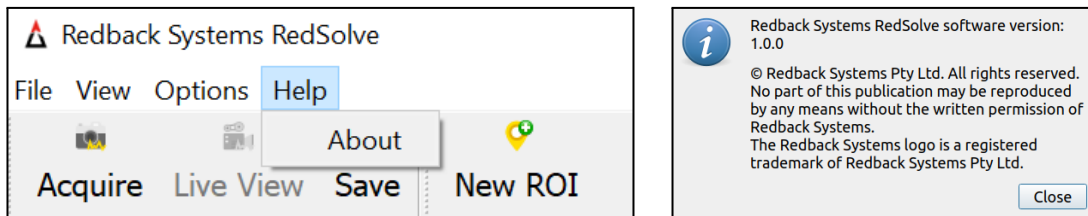


Figure 4: The About dialog is accessible from the Help menu.

6.2 Software Installation

1. Prior to commencing the installation process, terminate and exit any programs currently running on your computer.
2. Ensure the spectrometer is not connected to the computer.
3. Install the hardware driver from the USB flash drive.
4. On the install options page you only need to select the driver, as shown in Figure 5.

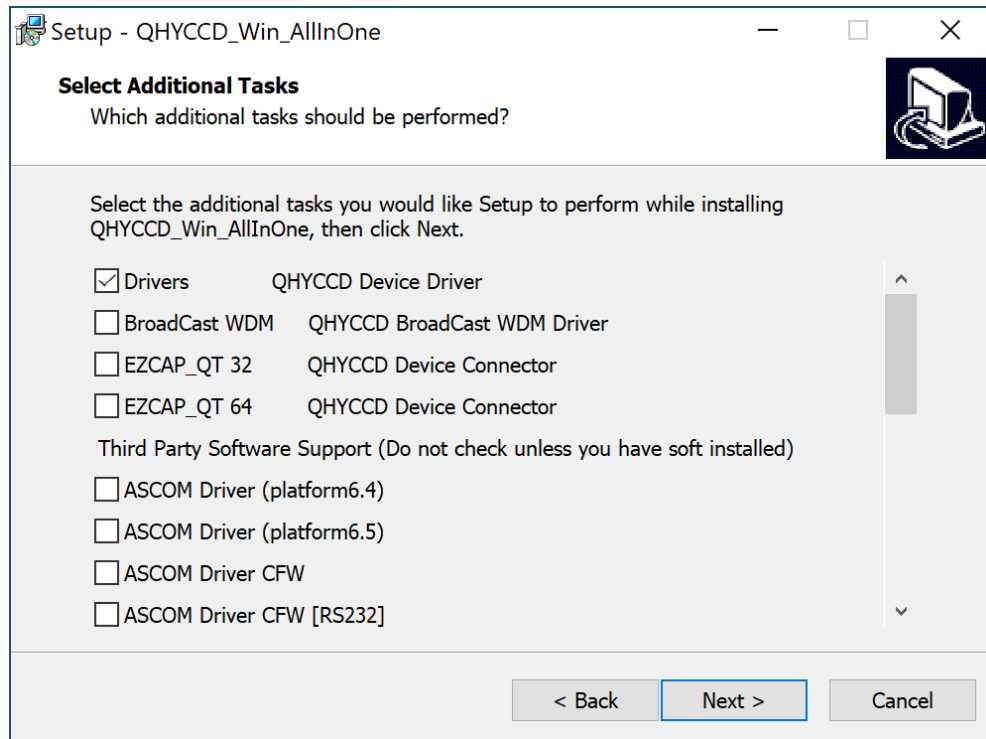


Figure 5: The device installation wizard. Select Drivers only and proceed with the installation.

5. Download and run the latest **RedSolve Setup [version].exe** file from our website and follow the prompts presented by the install wizard.
6. After successfully installing the software, connect the RS10k spectrometer to your computer via the provided USB 3.0 cable.
7. Run RedSolve, then open the **Settings** dialog from the **Options** menu. Load the calibration file from the provided USB flash drive.

6.3 Wavelength Calibration

Each spectrometer is shipped with a unique calibration file. As part of the spectrometer installation process you must first load your calibration data from the USB drive. If no calibration file has been previously used, you will be prompted by the below dialogue. Once the calibration file is loaded you can use RedSolve to acquire data.

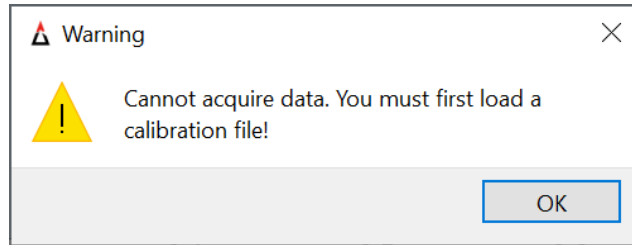


Figure 6: A warning to load the calibration file is shown on startup.

Clicking **OK** will take you directly to the settings window where you can load the included calibration file. You must click **OK** or **Apply** in the settings window to activate the calibration file. The **Settings** dialog can also be accessed from the **Options** menu.

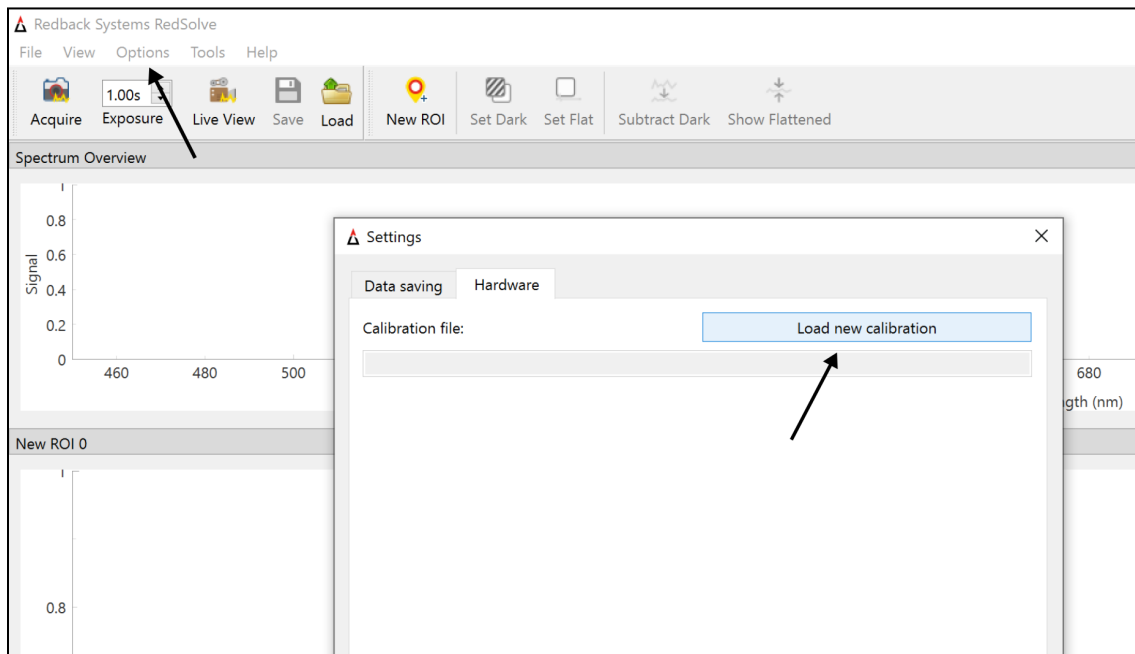


Figure 7: Load your calibration file from the USB drive into RedSolve.

6.4 User Interface

Below (Figure 8) is an annotated screenshot of the RedSolve user interface.

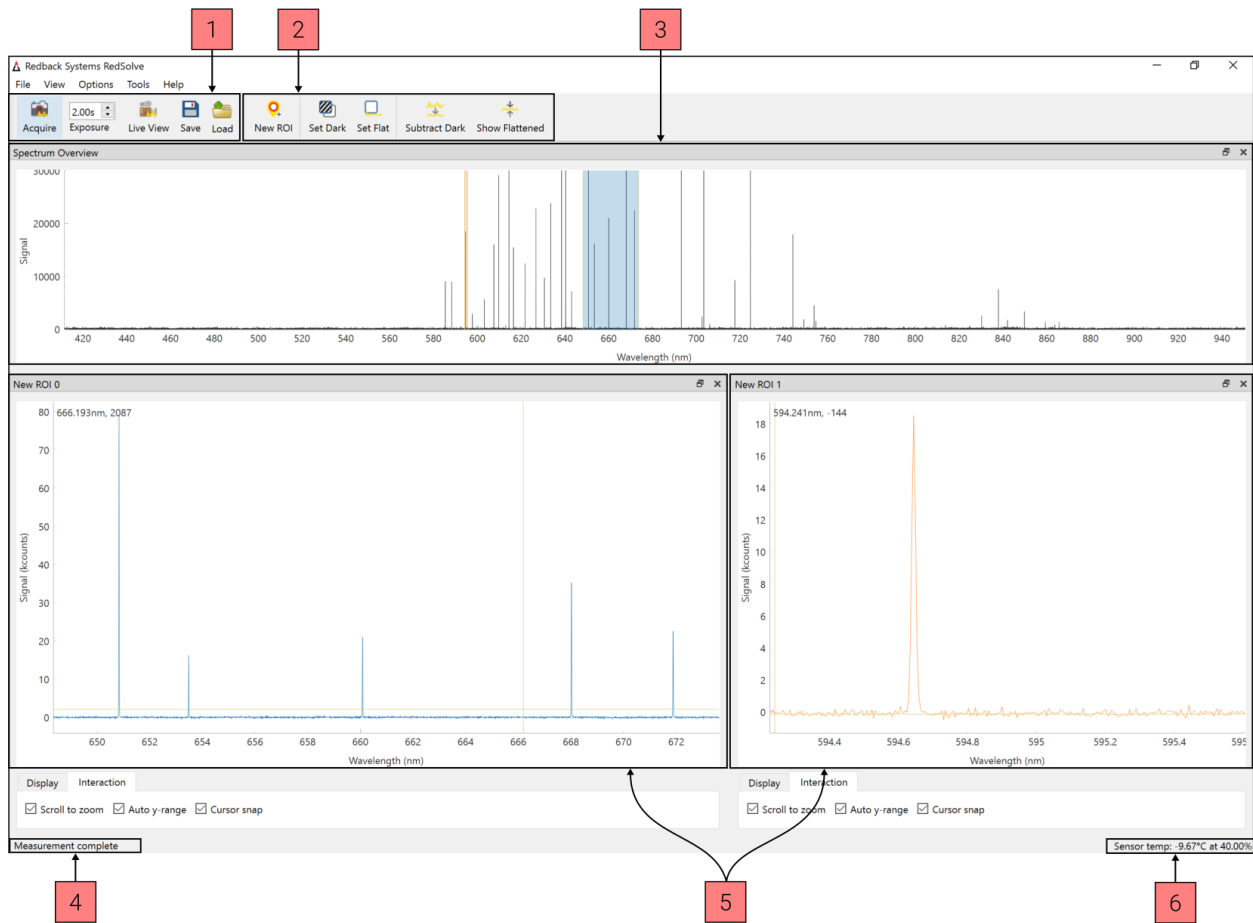











Figure 8: The RedSolve main window.

The annotated sections of the user interface are:

1. Measurement toolbar.
2. Data visualisation toolbar.
3. Full-spectrum thumbnail plot. This panel will always display the full data range acquired.
4. Status bar.
5. Regions of Interest (ROIs). A region of interest (ROI) can be created to inspect a subset of the collected data. Multiple ROI panels can be created.
6. Detector temperature and relative humidity (for cooled detectors only).

6.4.1 Toolbar Actions

All action buttons and menu selections contain mouseover text where appropriate. The following table briefly describes the most commonly used actions.

| | | |
|---|----------------|---|
|  | Acquire | Exposes the camera for the set exposure duration and converts the image into data. |
| | Exposure time | The detector exposure time in seconds. |
|  | Live view | Refreshes the spectrum at the Live freq rate. No data is recorded from Live view. |
|  | Save | Saves the spectrum data to a *.csv file. The user will be prompted to confirm the saving directory and filename. |
|  | Load | Load previously saved data for further exploration or processing. |
|  | New ROI | Creates a new region of interest (ROI). |
|  | Set Dark | Set the current data as a dark frame to allow instant dark subtraction. |
|  | Set Flat | Set the current data as a spectrally flat frame to allow amplitude compensation for the echelle blaze angle modulation. |
|  | Subtract Dark | Subtract the current dark frame from the measured data. Can be toggled on and off as desired without reacquiring data. |
|  | Show Flattened | Apply the flat-fielding compensation for the echelle blaze angle modulation. Useful when visualising broader spectral features. |

6.4.2 Spectrum Acquisition

The detector chip provided in your Redback Systems spectrometer may have higher sensitivity than other comparable spectrometers. For this reason, to avoid saturation of the detector we recommend starting your measurements with shorter exposure times, and incrementing the exposure time as required. The red line in the overview plot shows the maximum intensity before saturation. Breaching the exposure limit can cause light bleeding into adjacent orders which generates false signals in the spectrum. Please stay below the limit in your region of interest to avoid distorted data.

NOTE: Stay below the saturation limit in your region of interest to avoid distorted data and artificially created peaks from light bleeding into adjacent orders.

6.4.3 Saving data

To save your data, click on the **Save** button and select the desired file directory. The complete data array will be saved in *.csv file format. Relevant metadata (e.g. exposure time, acquisition date, etc.) will be saved in the file header. A presentation-ready image showing a screenshot of the data is also saved (see example in Figure 9).

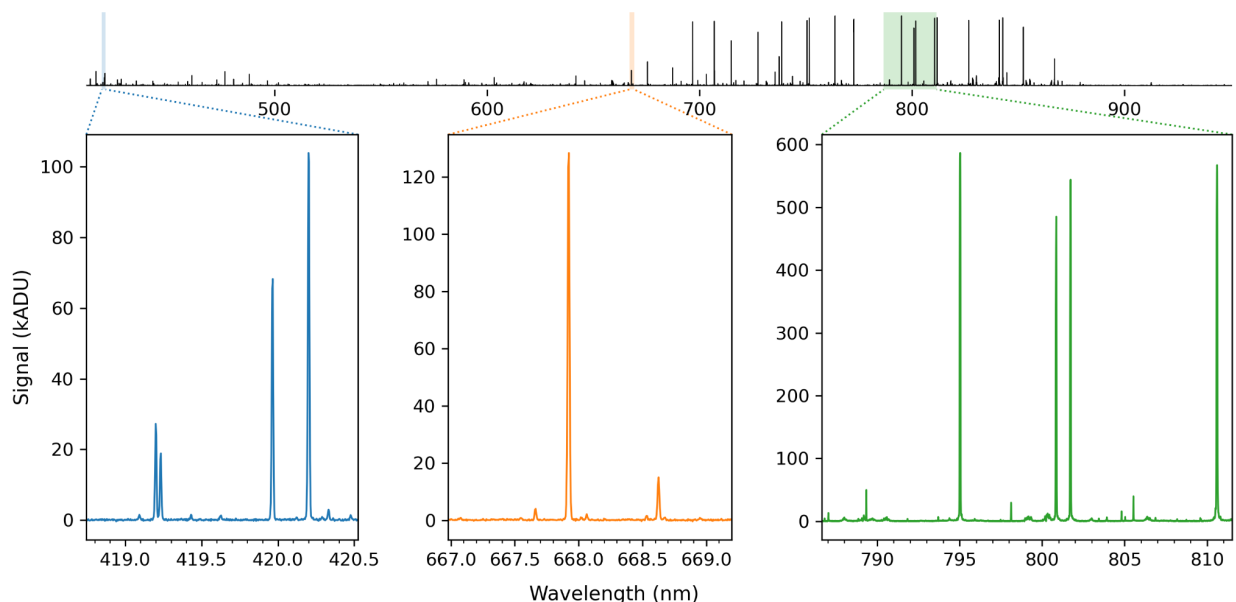


Figure 9: Example of a presentation-ready image.

6.4.4 Regions of interest (ROIs)

To give users instant access to data analysis, one can create multiple regions of interest (ROIs) in the main window. Many ROIs can be created. If the number of ROIs opened exceeds the available screen real-estate, then new ROI windows will be created as tabs.

6.4.5 Dark Screen

Selecting the **Dark screen** option from the **View** menu changes the background colour from light to dark for low-light experiments. Icons and toolbar buttons are not affected by the dark screen mode (Figure 10).

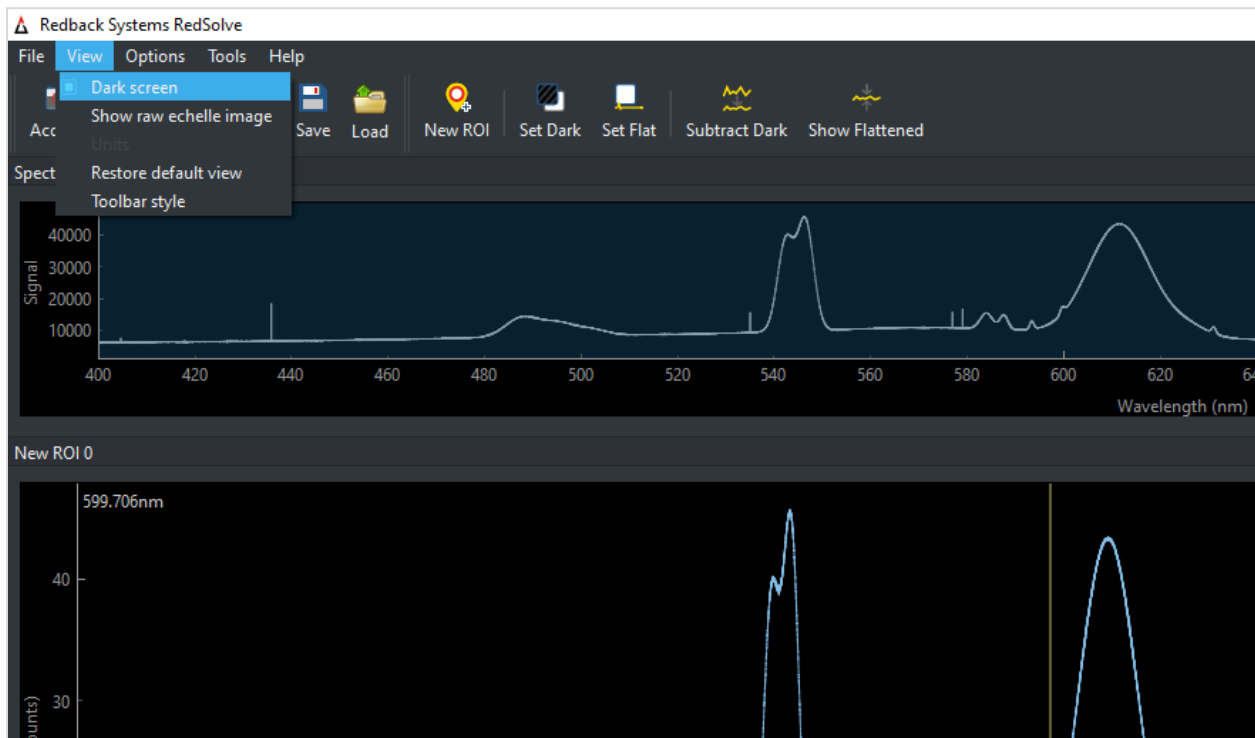


Figure 10: RedSolve dark screen mode.

6.4.6 Periodic Acquire

The Periodic Acquire function will automatically acquire data at defined intervals, and for either a fixed or infinite number of repetitions. Additionally, the user can toggle if they would like to save the data from each acquisition.

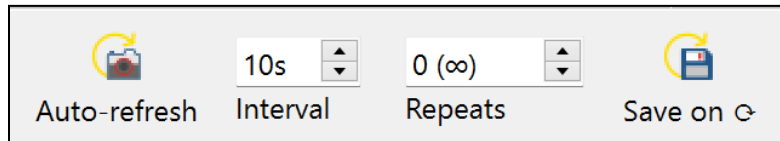


Figure 11: The Periodic Acquire menu, located within the Tools menu.

Figure 11 shows the Periodic Acquire menu. When the **Auto-refresh** button is engaged the measurement will run with the input Interval and Repeats parameters. Setting **Repeats** to “0” will continue the measurement series indefinitely. Toggling **Save on** will save the acquired data after each acquisition.

6.4.7 Dark Calibration

Modern CMOS detectors offer a number of advantages compared to more traditional CCD detectors, including increased sensitivity over a wider wavelength range and faster detector read-out. Similarly to CCD detectors, their performance, however, strongly depends on temperature. As a consequence, some background counts from thermal electrons are typically recorded, even when no light hits the detector chip. First-order data reduction must be applied to all recorded images in order to remove noise associated with the CMOS detector. A dark frame is recorded under the same conditions (exposure time) as the science frame. The following steps must be followed to successfully remove dark current from the science exposures:

1. Switch off the light source or cover the single-mode fibre input.
2. Acquire a dark frame with the same exposure time as the science frame.
3. Click the **Set Dark** button in the toolbar.

After the dark frame has been set, the **Subtract Dark** toolbar button can be toggled to automatically remove the dark signal from any recorded spectra (Figure 12).

NOTE: You must repeat steps 1-3 whenever you change the exposure time.

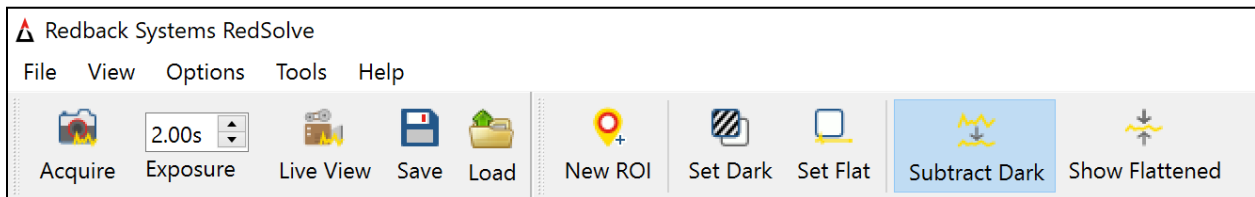


Figure 12: Subtract Dark icon activated.

6.4.8 Flat-Field Calibration

Spectrometers, like any optical instrument, can have non-uniformities in their detector array and optical system. These non-uniformities can lead to variations in sensitivity across different wavelengths or regions of the detector. Flat-field calibration helps to compensate for these non-uniformities by normalising the response of the device across the entire wavelength range. A complete data set includes a science frame with real source data, a flat-field (i.e. white-light) frame, and a dark frame. The following steps describe how you acquire and process the data:

1. Switch off the light source or cover the fibre input.
2. Acquire an exposure with the same settings (exposure time, etc.) that will be used for your measurement.
3. Click the **Set Dark** button in the toolbar.
4. Uncover the fibre and record a spectrum of a broad-band light source, preferably use a tungsten-quartz lamp (e.g. Thorlabs SLS201L or similar).
5. Acquire an exposure with an exposure setting lower than the overexposure limit (typically around 170 kcounts at 650 nm). Stay below the exposure limit (red line) over the entire range (→ observe overview plot).
6. Click the **Set Flat** button in the toolbar once the white-light spectrum is acquired.

After the dark and white-light frames have been set, the **Show Flattened** toolbar button can be toggled to automatically flatten the spectrum of any recorded science spectra.

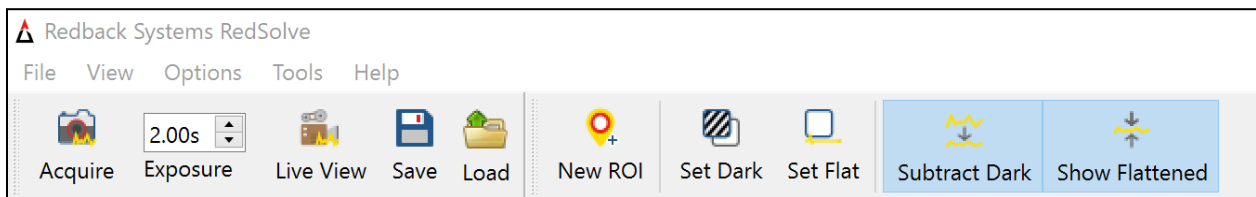


Figure 13: Subtract Dark and Show Flattened icons simultaneously activated.

6.4.9 Quick Flat

Coming soon.

6.4.10 Overexposure Warning

Your RS10k spectrometer is equipped with a state-of-the-art CMOS detector. To ensure accurate and reliable measurements, it is essential to operate the detector within its linear regime whenever possible. In the linear regime, the output response of a digital detector is directly proportional to the input light intensity. This means that as the intensity of the incident light increases, the output signal from the detector also increases in a linear manner. In this region, the detector behaves predictably, and its response can be calibrated accurately.

In the non-linear regime, the output response of a digital detector deviates from a linear relationship with the incident light intensity. Instead of increasing linearly, the output signal may start to saturate or exhibit a more complex response. In the non-linear region, the detector's behaviour becomes less predictable, and its response might become affected by various factors, such as the detector's internal characteristics or environmental conditions. When the incident intensity is significantly higher than the linear regime of the detector, light will spill into neighbouring pixels. Due to the close spacing of the echelle orders, light can also spill into neighbouring orders which will manifest as additional **false** peaks in the spectrum (see Figure 14).

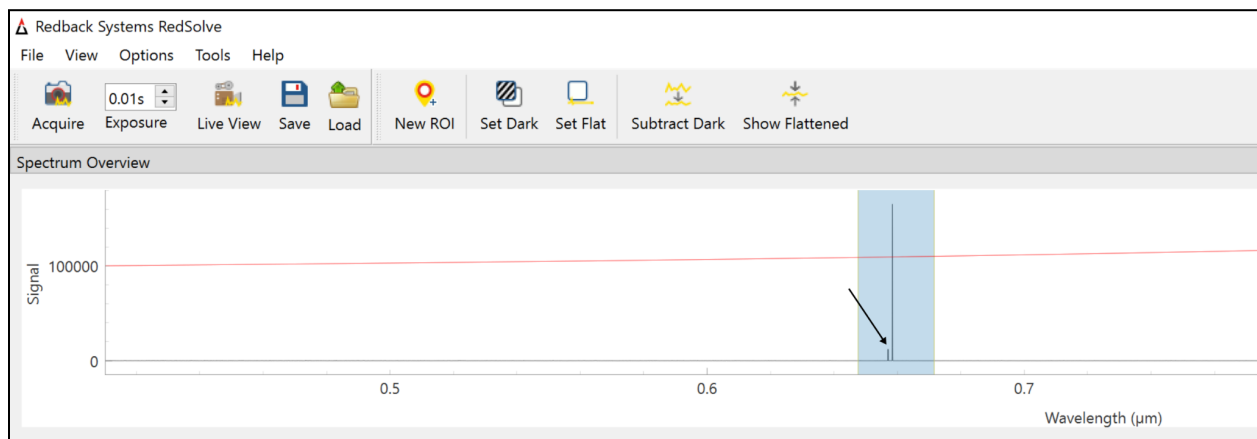


Figure 14: Spectrum of a red diode Laser. The arrow indicates a second peak in the next echelle order due to an overexposed signal. The red line indicates the exposure limit.

RedSolve is equipped with an overexposure warning which alerts you when recorded intensities are higher than the threshold (red line in the overview plot). If your light source has low and high level signals the exposure warning is triggered for the highest

signals in the recorded spectrum. You are still able to increase the exposure time but please be aware that your data of interest must be below the exposure limit to be accurate. Figure 15 shows an overexposed white-light LED spectrum. The modulation shown on the left ROI (blue) results from that the "centre position" of each echelle order is continually varying, but the sampled detector pixels used to calculate the signal are in a discrete grid. This means that different portions of the overexposed gaussian profile are sampled. Please keep the exposure for your ROI below the exposure limit.

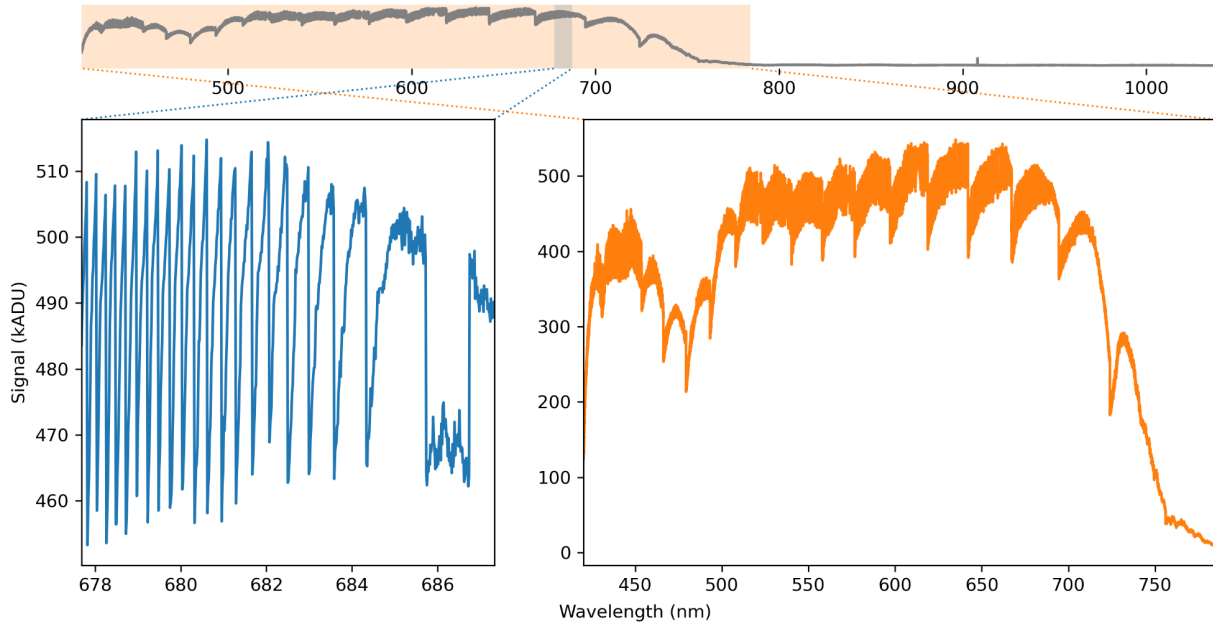


Figure 15: Overexposed spectrum of a broadband white-light source.

6.5 Python API

Our Python API, **RedMote** (“Redback Systems Remote Control”), makes it easy to automate measurements and seamlessly integrate spectroscopy into your workflow. Capture the data in line with post-processing and analysis.

NOTE: RedMote is a remote control API for our RedSolve software. RedSolve must be running in order to establish an API connection with RedMote. If RedMote is restarted with RedSolve still running, it will fail to connect properly. In this case, go to Tools then Reset Remote Control which will allow a new RedMote script to connect.

6.5.1 Requirements

Our Python API is compatible with Python 2.x and Python 3.x. Additionally, you must be using a RedSolve version greater than version 1.3.0.

6.5.2 How to Connect

Step 1: Download the latest version of our **redbacksystems** python package wheel file from www.redback.systems/downloads

Step 2: Open a command prompt in your chosen Python environment and navigate to the directors with the wheel file (.whl).

Step 3: Use pip to install the package by running the command:

```
pip install redbacksystems-X.X.X-py3-none-any.whl
```

The package **redbacksystems** will now be installed in your Python environment.

Step 4: Import **RedMote** from **redbacksystems** to undertake measurements with your Redback Systems spectrometer:

```
from redbacksystems import RedMote
```


6.5.3 API Command List

The following API calls are currently available through RedMote:

| |
|---|
| redmote.do_acquire() |
| Do a single acquisition of spectral data. |
| <u>Parameters</u> |
| none |
| <u>Returns</u> |
| int : 0 for success, otherwise error code |

| |
|--|
| redmote.get_detector_id() |
| Get the unique ID of the spectrometer. |
| <u>Parameters</u> |
| none |
| <u>Returns</u> |
| str : Unique device ID |

| |
|---|
| redmote.set_exposure_time(exp_time) |
| Set the spectrometer exposure time. |
| <u>Parameters</u> |
| exp_time : float Exposure time in seconds. |
| <u>Returns</u> |

exp_time : float
Actual exposure time in seconds.

redmote.get_data()

Get the spectrum data.

Parameters

none

Returns

spec_data : numpy.ndarray
1-D array containing spectrum data

redmote.get_wlen()

Get the array of wavelengths sampled in the spectrum.

Parameters

none

Returns

spec_wlen : numpy.ndarray
1-D array containing wavelengths

redmote.save_data(fpath, fname_desc='', use_timestamp=True)

Save data to file using the logic.

Parameters

fpath : string

Path of directory where data is to be saved

fname_desc : string

Filename details

use_timestamp : bool

use timestamp string as prefix to filename (default)

Returns

int : 0 for success, otherwise error code

6.5.3 API Example

RedMote is easy to use after being imported. Doing a basic measurement requires only a few lines of code, as shown in the example below.

```
from rebacksystems import RedMote

my_rbs_inst = RedMote() # create instance of the RedMote
class, initialising the connection to RedSolve

my_rbs_inst.set_exposure_time(2.4) # set exposure time to 2.4
seconds

my_rbs_inst.do_acquire() # do a single acquisition of spectral
data

spec_data = my_rbs_inst.get_data()

# Trivial demonstration of data visualisation
import matplotlib.pyplot as plt
plt.plot(wlen, signal)
```

6.5.4 API Troubleshooting

RedSolve must be running in order to establish an API connection with RedMote. If RedMote is restarted with RedSolve still running, it will fail to connect properly. In this case, go to the **Tools** menu and select **Reset Remote Control** which will allow a new RedMote script to connect.

6.6 General Troubleshooting

If you encounter any issues during the installation or operation of RedSolve, visit our website for support resources. Our customer support team is also available to assist you with any questions or concerns you may have.

NOTE: RedSolve software creates log files in the user appdata directory. These can be ignored by the user, but are included for the purpose of debugging.

6.6.1 Wavelength offset correction

Your RS10k wavelength calibration is factory set. Please handle the spectrometer with care as it is a precision instrument. If you believe the RS10k requires recalibration, please contact us (see Section 8).

7. Device properties

7.1 Optical Parameters

| | |
|--|--|
| Spectral coverage | 450-1030 nm (simultaneous coverage ¹) 22,222 - 9,709 cm ⁻¹ |
| Resolving power [$R=\lambda/d\lambda$] | 17,000-10,000 (450-1030 nm) |
| Spectral Resolution [$d\lambda$] | ~60 pm (FWHM) at 632.8 nm |
| Efficiency | 42% (450 nm), 41% (550 nm), 12% (950 nm) |
| Wavelength stability | <5 pm/°C |
| Fibre input | standard SMF FC/PC (see Section 5.3) |
| Detector | uncooled CMOS, QE~38% at 900 nm |
| Exposure time | 0.001-20 s |
| Acquisition rate | Up to 10 Hz (requires USB 3.0 interface) |

¹ Wavelength range limited to SMF bandwidth (see Section 5.3).

7.2 Device Parameters

| | |
|-----------------------------|------------------------------|
| Weight | 0.65 kg (1.43 lbs) |
| Temperature operating range | 15-35°C |
| Humidity operating range | 0-70% non-condensing |
| Computer interface | USB 3.0 (USB 2.0 compatible) |

7.3 Device Dimensions

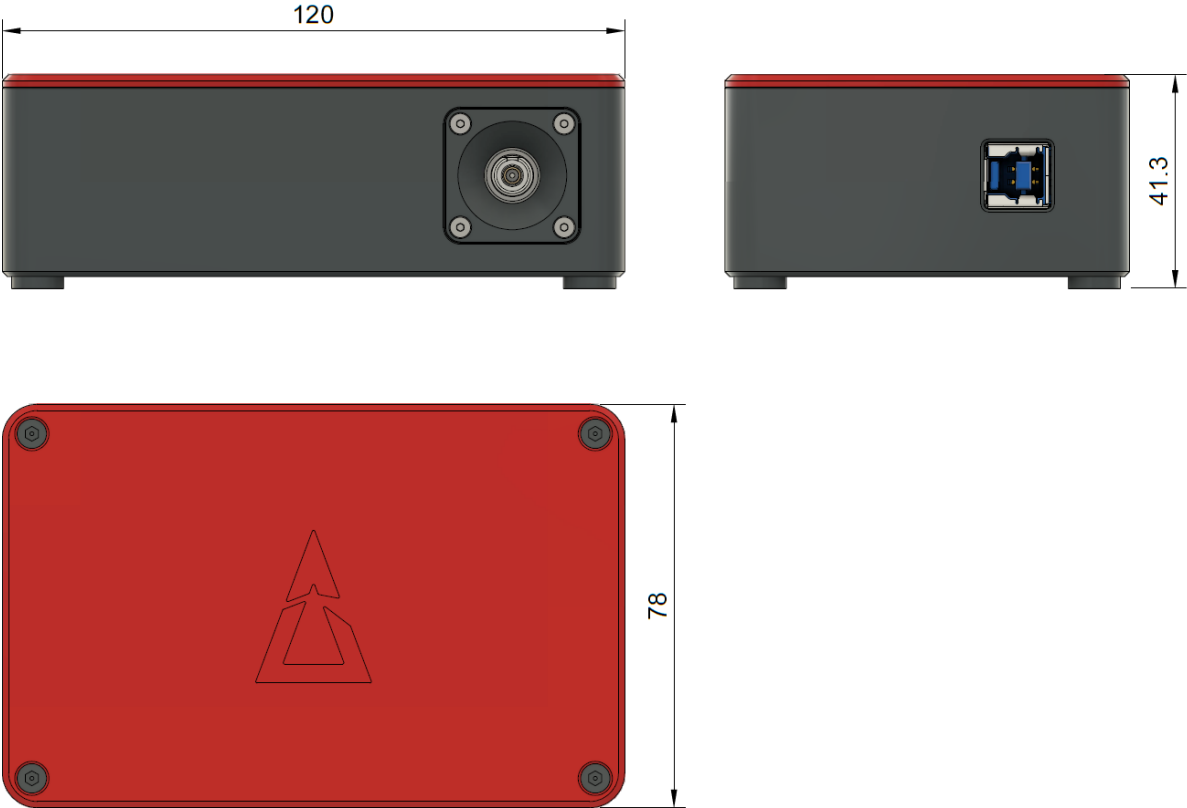


Figure 16: Dimensions of the RS10k echelle spectrometer.

8. Technical Support

Should you have any questions or require further assistance, our dedicated customer support team is here to assist you. Reach out to us via the details below. RedSolve software creates log files in the user appdata directory, which can be included in with your enquiry.

[Redback Systems Technical Support](#)

E-mail: support@redback.systems